



US006356357B1

(12) **United States Patent**
Anderson et al.

(10) **Patent No.:** US **6,356,357 B1**
(45) **Date of Patent:** Mar. 12, 2002

(54) **METHOD AND SYSTEM FOR A MULTI-TASKING PRINTER CAPABLE OF PRINTING AND PROCESSING IMAGE DATA**

5,825,988 A * 10/1998 Collard et al. 358/1.13
6,052,692 A * 4/2000 Anderson et al. 707/102
6,115,024 A * 9/2000 Hayama 345/116

(75) Inventors: **Eric C. Anderson**, San Jose; **Stephen D. Saylor**, Morgan Hill, both of CA (US)

* cited by examiner

(73) Assignee: **FlashPoint Technology, Inc.**, Peterborough, NH (US)

Primary Examiner—Edward Coles
Assistant Examiner—Twyler Lamb

(74) *Attorney, Agent, or Firm*—Sawyer Law Group LLP

(*) Notice: Subject to any disclaimer, the term of this patent is extended or adjusted under 35 U.S.C. 154(b) by 0 days.

(57) **ABSTRACT**

A system and method for providing a printer capable of generating a hard copy of at least one image is disclosed. The at least one image is stored in an image file on a removable memory. In one aspect, the method and system include a graphical user interface for allowing a user to view at least a portion of the image and a printing device coupled with the graphical user interface for printing the hard copy of the at least one image. In a second aspect, the method and system include means for storing the at least one image in a second format and a printing device coupled with the storing means for printing the hard copy of the at least one image. In a third aspect, the method and system include means for modifying the at least one image, means coupled with the modifying means for storing the at modified at least one image in the first format, and a printing device coupled with the storing means for printing the hard copy of the at least one image.

(21) Appl. No.: **09/107,809**

(22) Filed: **Jun. 30, 1998**

(51) **Int. Cl.**⁷ **B41B 15/00**; B41J 15/00; G09G 5/40; G09G 5/00

(52) **U.S. Cl.** **358/1.17**; 358/1.17; 358/1.16; 358/1.15; 358/1.14; 358/1.13; 345/116; 345/117

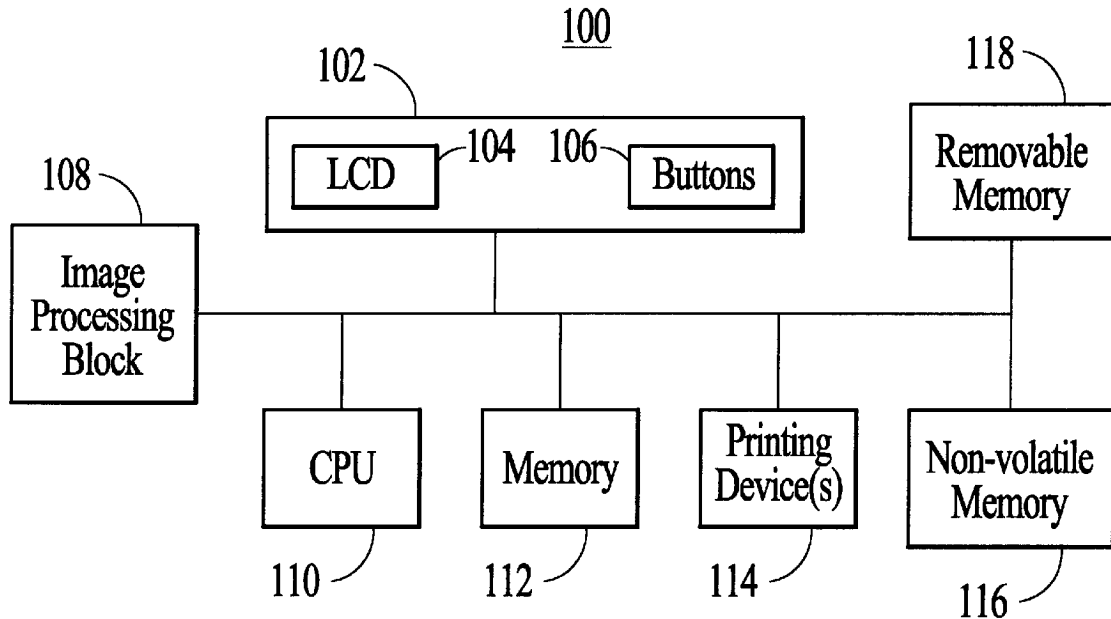
(58) **Field of Search** 358/1.13, 1.14, 358/1.15, 1.16, 1.17, 1.1, 1.18, 1.9, 1.12; 345/116, 117

(56) **References Cited**

U.S. PATENT DOCUMENTS

5,402,170 A 3/1995 Parulski et al. 348/211

17 Claims, 6 Drawing Sheets



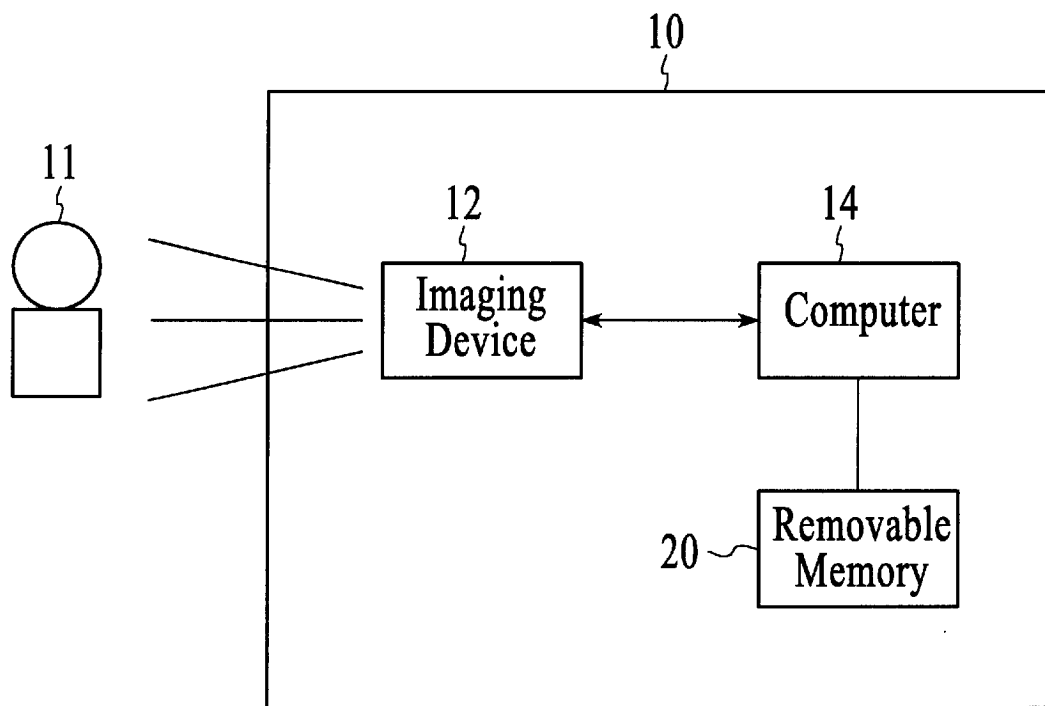
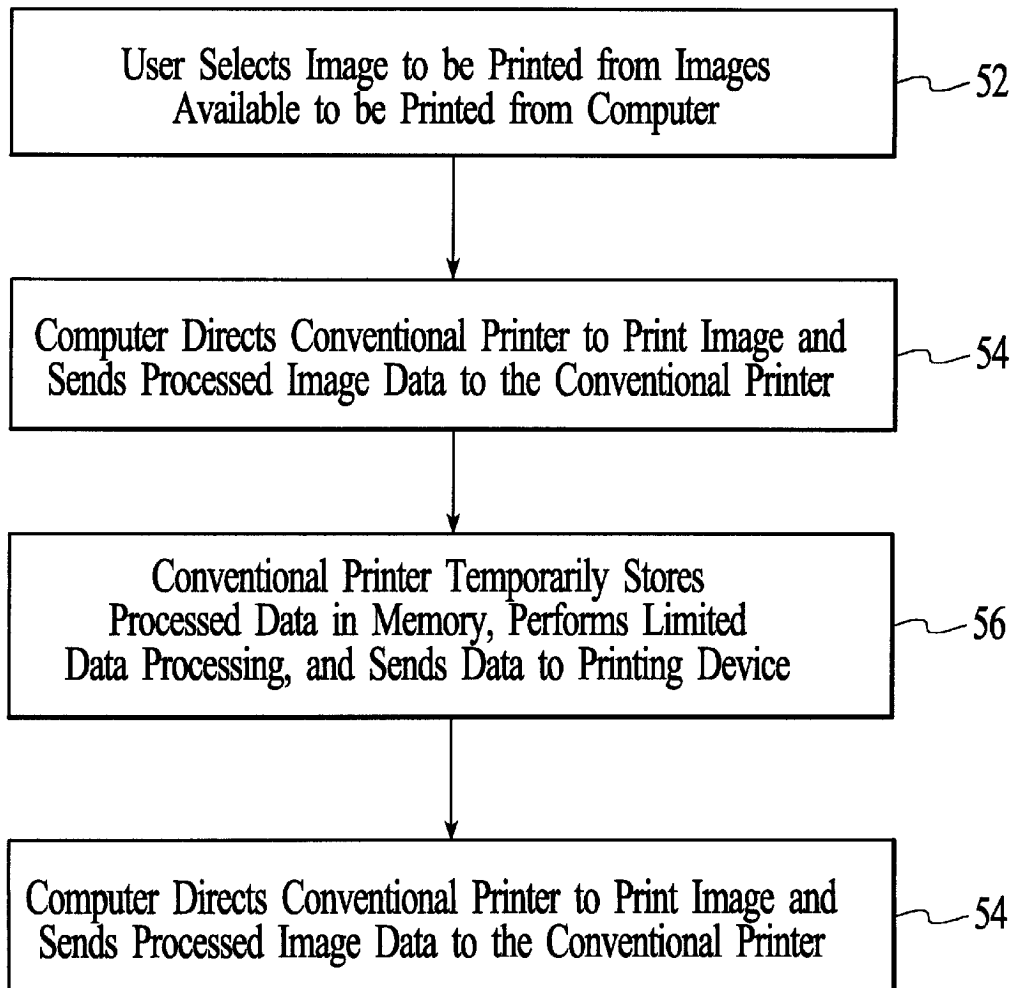
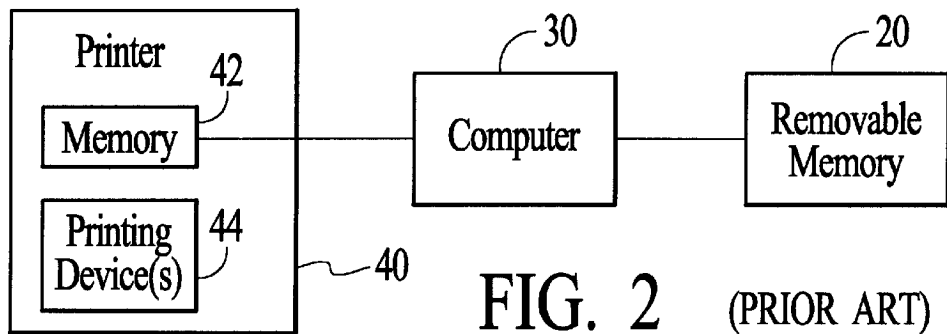


FIG. 1
(PRIOR ART)



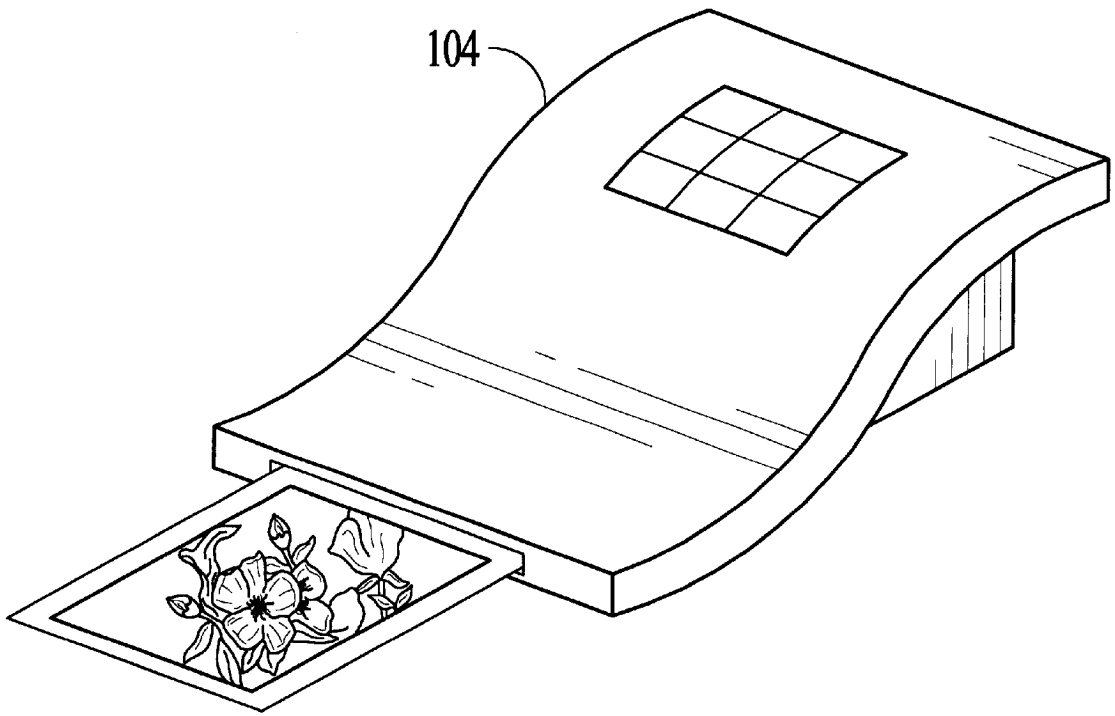


FIG. 4

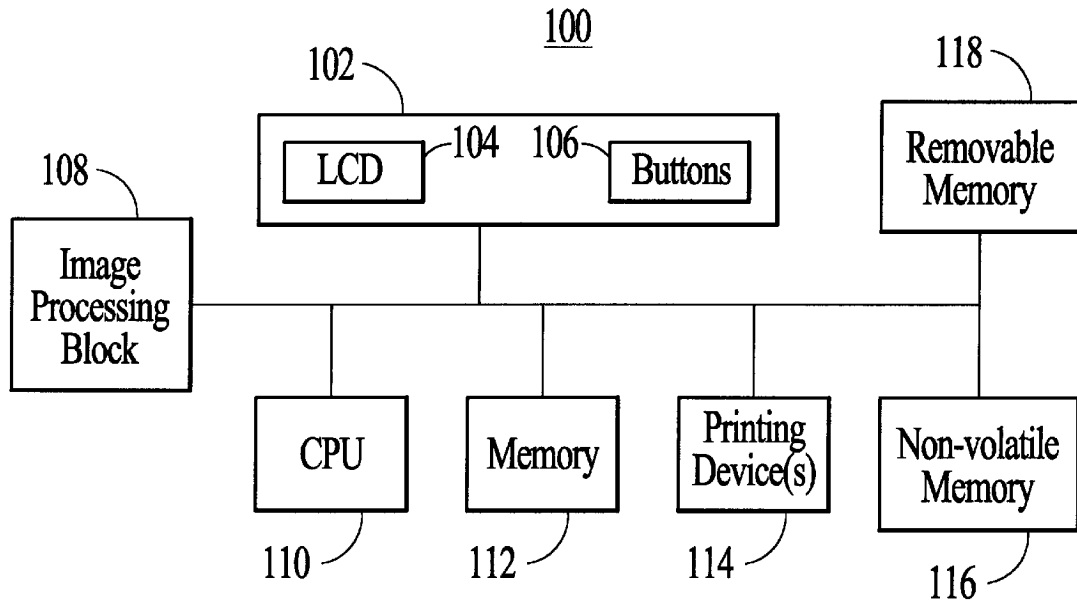


FIG. 5

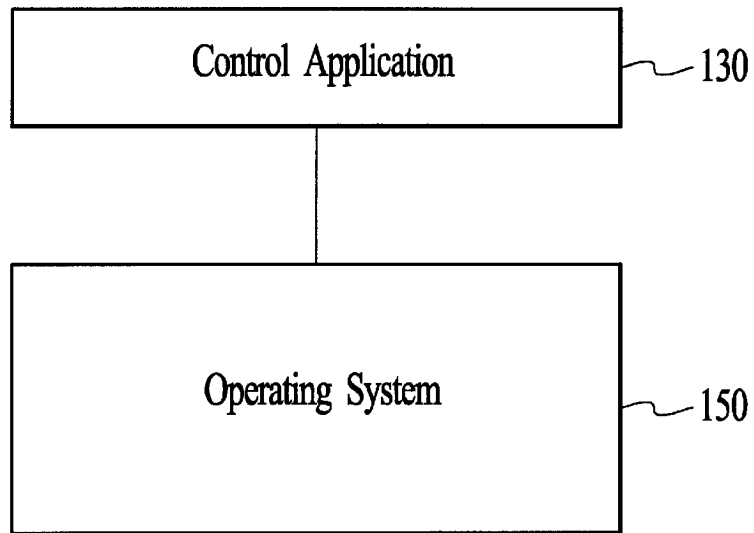


FIG. 6

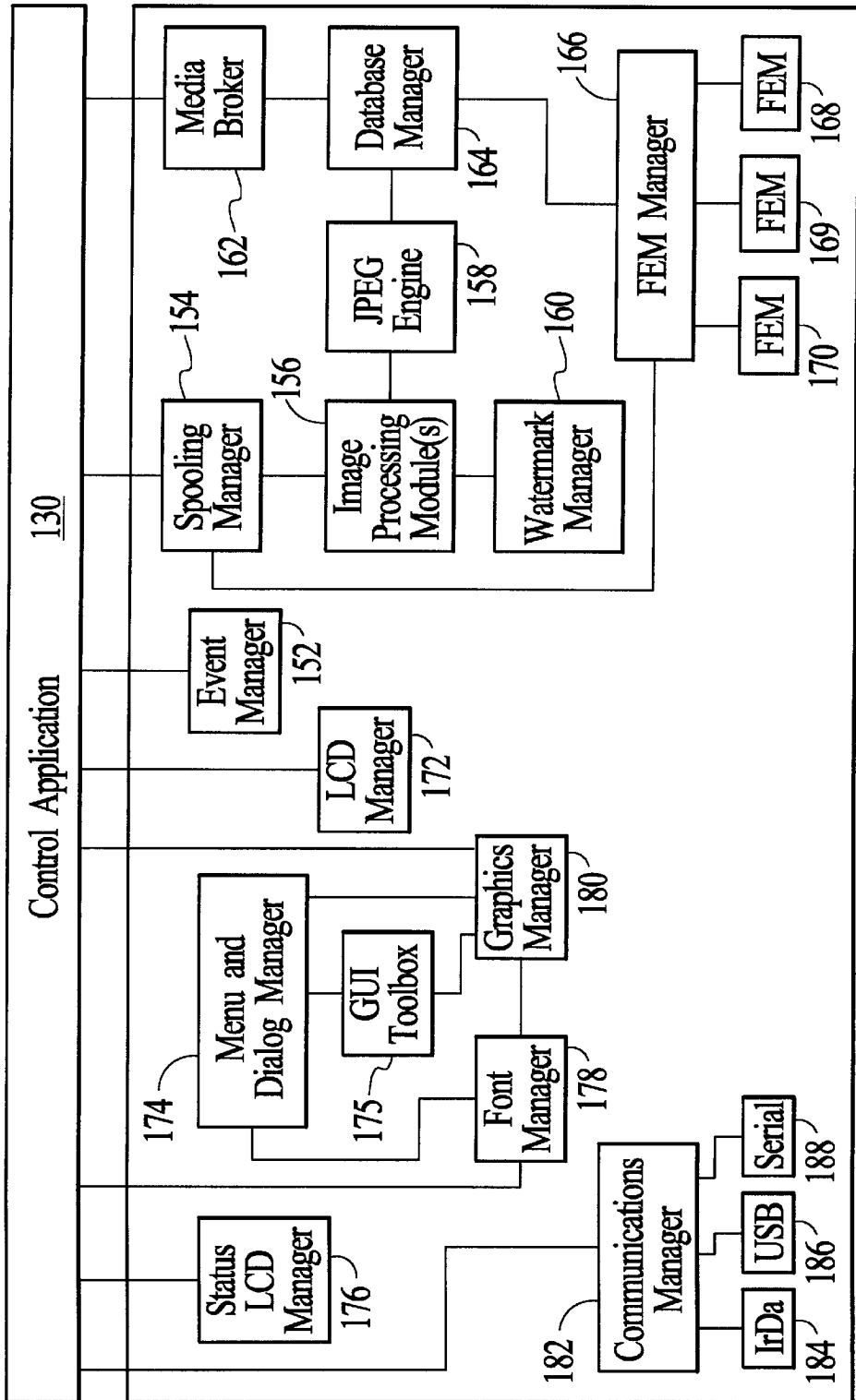


FIG. 7

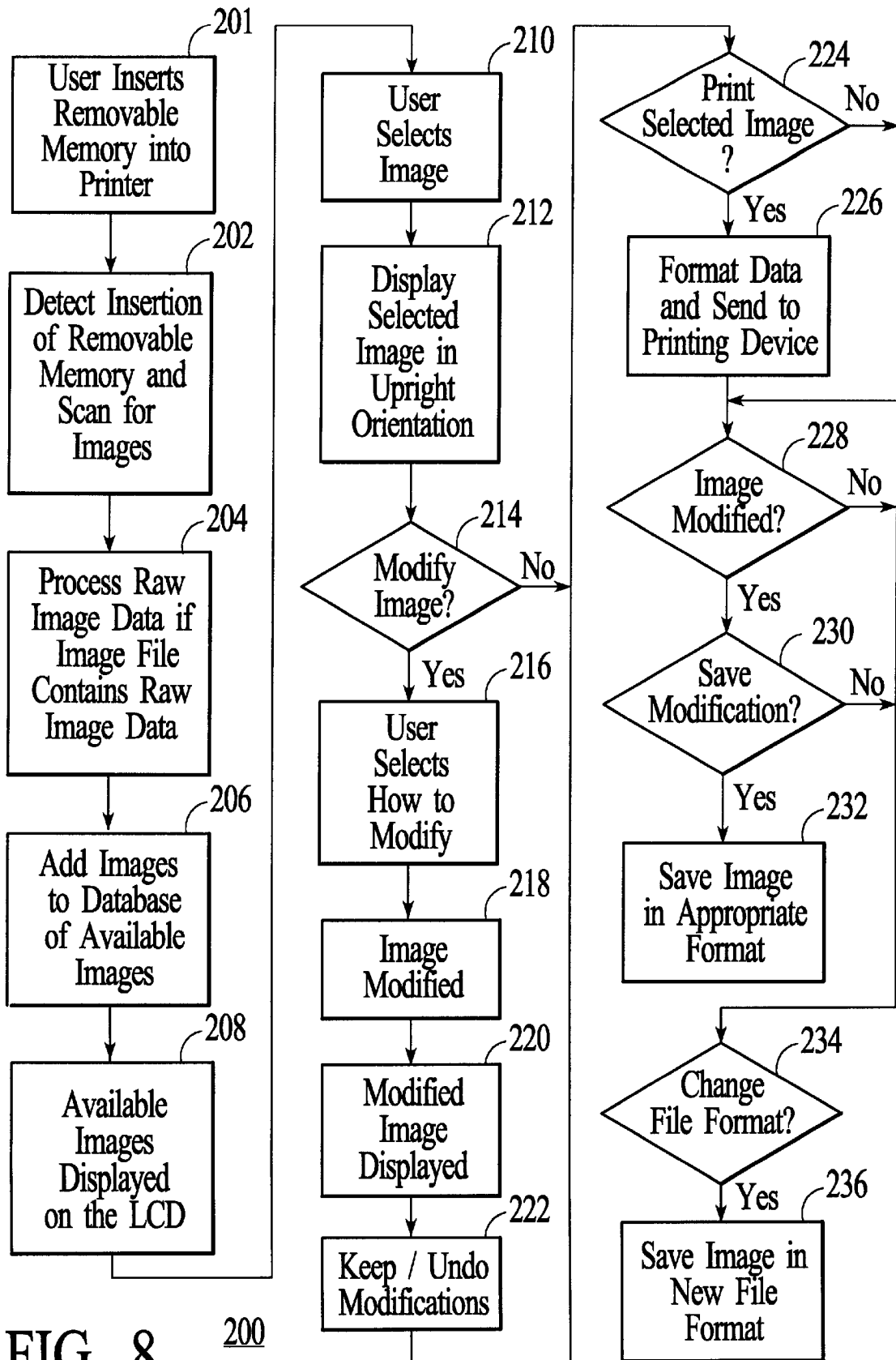


FIG. 8

200

1

METHOD AND SYSTEM FOR A MULTI-TASKING PRINTER CAPABLE OF PRINTING AND PROCESSING IMAGE DATA

FIELD OF THE INVENTION

The present invention relates to printers and more particularly to a method and system for providing a printer which is capable of performing a variety of functions in addition to printing images from a particular format.

BACKGROUND OF THE INVENTION

Conventional printers are used to print images which may have been captured from a variety of devices, including an image capture device such as a digital camera. When generating a hard copy of the image, the conventional printer is typically coupled to a computer or other microprocessor based system. For example, data for images captured by a digital camera may be processed and stored in a particular format such as JPEG (Joint Photographic Experts Group). The digital camera may process the raw image data, such as color filter array ("CFA") data, and save the processed image files on a removable memory, such as a flash card. Images on the removable memory are then typically archived on a hard drive of a computer or another memory compatible with the computer. Alternatively, the digital camera may provide little or no data processing functions. In this case, raw image data is provided to the computer, which processes the image data and stores the processed data in an image file.

In either case, a user typically employs the computer in conjunction with a printer to generate a hard copy of the image stored in an image file containing processed image data. When a user desires a hard copy of such an image, the user selects the appropriate image file from those accessible to the computer and directs the computer to print the image. Typically, the computer then instructs the conventional printer to print the image.

The conventional printer typically includes a communication port for transferring information to and receiving information from the computer, a buffer for storing data of an image to be printed, and a printing device such as an inkjet. Some printers also include a status liquid crystal display ("LCD") for providing limited user interaction. Using the status LCD, a user can provide some instructions to the conventional printer without using the computer. However, the conventional printer typically receives signals and data in a particular format from the computer via the communication port. The format of the data is one which the conventional printer can use for printing an image. The conventional printer typically saves the image data in the buffer. The image data is then converted to the appropriate format for controlling the printing devices and provided to the printing devices. Thus, the hard copy of the image is printed.

Consequently, most conventional printers require some interaction with the computer in order to print images stored in an image file. Conventional printers also require either the computer or the digital camera to process raw image data into a format recognized by the conventional printer. A few conventional printers are capable of printing an image stored on another memory, such as a PCMCIA (Personal Computer Memory Card International Association) card. However, such a printer is limited to printing images from processed image data stored in a particular format. The user interaction allowed between such a conventional printer and the user is also limited. Typically, the conventional printer merely prints all image files on the PCMCIA card or allows a user

2

to select which images are to be printed from the image files stored on the PCMCIA card.

Accordingly, what is needed is a system and method for providing additional functionality via a printer. The present invention addresses such a need.

SUMMARY OF THE INVENTION

The present invention provides a method and system for providing a printer capable of generating a hard copy of at least one image. The at least one image is stored in an image file on a removable memory. In one aspect, the method and system comprise providing a graphical user interface for allowing a user to view at least a portion of the image and a printing device coupled with the graphical user interface for printing the hard copy of the at least one image. In a second aspect, the method and system comprise providing means for storing the at least one image in a second format and a printing device coupled with the storing means for printing the hard copy of the at least one image. In a third aspect, the method and system comprise providing means for modifying the at least one image, means coupled with the modifying means for storing the at modified at least one image in the first format, and a printing device coupled with the storing means for printing the hard copy of the at least one image.

According to the system and method disclosed herein, the present invention allows a printer to provide increased functionality, thereby increasing overall system performance and simplifying user interactions.

BRIEF DESCRIPTION OF THE DRAWINGS

FIG. 1 is a block diagram of a digital camera.

FIG. 2 is a block diagram of a conventional system for printing images captured by a digital camera

FIG. 3 is a flow chart depicting a conventional method for obtaining a hard copy of an image captured by a digital camera.

FIG. 4 is a perspective view of a printer in accordance with the present invention.

FIG. 5 is a block diagram of one embodiment of a printer in accordance with the present invention.

FIG. 6 is a high level block diagram of a portion of the architecture of a printer in accordance with the present invention.

FIG. 7 is a more detailed block diagram of the architecture of a printer in accordance with the present invention.

FIG. 8 is a flow chart depicting one embodiment of a method for utilizing a printer in accordance with the present invention.

DETAILED DESCRIPTION OF THE INVENTION

The present invention relates to an improvement in printers. The following description is presented to enable one of ordinary skill in the art to make and use the invention and is provided in the context of a patent application and its requirements. Various modifications to the preferred embodiment will be readily apparent to those skilled in the art and the generic principles herein may be applied to other embodiments. Thus, the present invention is not intended to be limited to the embodiment shown but is to be accorded the widest scope consistent with the principles and features described herein.

FIG. 1 is a block diagram of a digital camera 10 which may be used to capture images. The digital camera 10

includes an imaging device **12**, a processing system **14**, and a removable memory **20**, such as a flash card. The imaging device **12** is optically coupled to an object **11** and electrically coupled to the processing system **14**. Once a photographer has focused the imaging device **12** on the object **11** and, using a capture button or some other means, instructed the digital camera **10** to capture an image of the object **11**, the processing system **13** commands the imaging device **12** to capture raw image data representing the object **11**. Typically, the raw image data is color filter array ("CFA") data. The captured raw image data is transferred to the processing system **14** which may store the image on the removable memory **20**.

In a first paradigm, the processing system **14** performs various processing functions on the image data before storing the image data on the removable memory **20**. The removable memory **20** may be a flash disk. However, another type of removable memory **20** may be used. In the first paradigm, the image stored in the removable memory **20** may include JPEG (Joint Photographic Experts Group) data. However, in a second paradigm, the processing system **14** stores the raw image data on the removable memory **20**. Note that the removable memory **20** may be in addition to or in lieu of an internal memory (not shown) for the digital camera **10**.

FIG. 2 depicts a conventional system for generating hard copy of images stored on the removable memory **20**. The conventional system includes a computer **30** and a conventional printer **40**. The conventional printer **40** includes a memory **42** and a printing device **44**. The memory **42** may include a page buffer. The printing device **44** may include print heads. The images may be copied or transferred from the removable memory **20** to an internal drive (not shown) of the computer or another storage medium (not shown). In addition, if the image is stored in the internal memory of the digital camera **10**, then the internal memory of the digital camera **10** may be coupled to the computer **30** instead of using the removable memory **20**. If the image stored on the removable memory **20** is stored as unprocessed data, then the computer **30** also processes the image data and stores the processed data, for example as a JPEG image.

FIG. 3 depicts a conventional method **50** for generating hard copy of an image. In the first paradigm, where the digital camera **10** provides image processing functions, the method **50** may commence after the computer **20** accesses the removable memory **20**. However, in the second paradigm, where the digital camera **10** stores raw image data, the method **50** commences after the computer **20** processes the raw image data.

The user selects the image to be printed from the images available for printing using the computer **30**, via step **52**. The computer then directs the printer to print the image and sends the processed image data to the conventional printer, via step **54**. The conventional printer then stores the processed image data in the memory **42**, performs some limited image processing and sends the data to the printing device **44** via step **56**. The limited image processing performed in step **56** converts the processed image data to the appropriate format for controlling the printing device **44**. The printing device **44** then prints the hard copy via step **58**.

The conventional printer **40** may also include a status liquid crystal display ("LCD") (not shown) for providing limited user interaction without requiring the user to provide and receive instructions through the computer **30**. The conventional printer **40** may also be capable of printing an image stored on another memory, such as a PCMCIA

(Personal Computer Memory Card International Association) card that is connected directly to the conventional printer **40**. However, one of ordinary skill in the art will realize that only very limited data processing and user interaction are performed by the conventional printer **40**. Typically, the conventional printer merely prints all image files on the PCMCIA card or allows a user to select which images are to be printed from the image files stored on the PCMCIA card. Thus, the images stored on the PCMCIA card typically include processed image data.

One of ordinary skill in the art will realize that most conventional printers **40** require some interaction with the computer **30** in order to print images stored in an image file. One of ordinary skill in the art will also recognize that the conventional printer **40** also uses either the computer **30** or the digital camera **10** to process raw image data into a format recognized by the conventional printer **30**. Even where the conventional printer **30** is capable of printing images stored on a removable memory directly connected to the conventional printer **40**, the images include processed image data. In addition, one of ordinary skill in the art will also readily realize that the conventional printer **40** performs few operations other than printing. For example, the conventional printer **40** does not display images and, other than temporarily saving image data for printing, does not save image data. Moreover, the conventional printer **40** is typically capable of working with a very limited number of file formats for image data provided to the printer **40**. Typically, the computer **30** is responsible for arranging data in a format which the printer **40** can use.

The present invention provides a method and system for providing a printer capable of generating a hard copy of at least one image. The at least one image is stored in an image file on a removable memory. In one aspect, the method and system comprise providing a graphical user interface for allowing a user to view at least a portion of the image and a printing device coupled with the graphical user interface for printing the hard copy of the at least one image. In a second aspect, the method and system comprise providing means for storing the at least one image in a second format and a printing device coupled with the storing means for printing the hard copy of the at least one image. In a third aspect, the method and system comprise providing means for modifying the at least one image, means coupled with the modifying means for storing the modified at least one image in the first format, and a printing device coupled with the storing means for printing the hard copy of the at least one image. Thus, a printer provided in accordance with the present invention provides has increased functionality. The present invention will be described in terms of a printer having particular functions and a particular architecture. However, one of ordinary skill in the art will readily recognize that this method and system will operate effectively for other functions provided by the printer and other architectures.

Utilizing a printer in accordance with the present invention provides significant added functionality without requiring the use of a computer. A user can view images on the printer built in accordance with the present invention. Using such a printer, a user can also modify images. Moreover, a user is allowed save the image in a new file format and process raw image data using the printer in accordance with the present. All of these functions are provided by the printer without requiring the use of a computer.

To more particularly illustrate the method and system in accordance with the present invention, refer now to FIG. 4

depicting a perspective view of one embodiment of a printer **100** in accordance with the present invention. The printer **100** includes an LCD **104**. The LCD **104** is capable of providing a graphical user interface, discussed more fully below.

FIG. **5** depicts a block diagram of one embodiment of the printer **100** in accordance with the present invention. The printer **100** in accordance with the present invention includes a graphical user interface (“GUI”) **102**. The GUI **102** preferably includes an LCD display **104** and buttons **106** for allowing user interaction. In addition, the GUI **102** could include a touch screen (not shown) in lieu of buttons **106**. The printer **100** includes a central processing unit (“CPU”) **110**, a memory **112**, a printing device **114**, a non-volatile memory **116**, and a removable memory receptacle **118**. The non-volatile memory **114**, which may typically comprise a conventional read-only memory or flash memory, stores a set of computer-readable program instructions to control the operation of printer **100**. The CPU **110** is capable of executing the program instructions stored in the non-volatile memory **116**. The printer **100** depicted in FIG. **4** provides at least a portion of image processing in hardware using image processing block **108**. However, nothing prevents the method and system from being used in a printer **100** which processes image data in software. In such a system, the image processing block **108** would be omitted. The removable memory receptacle **118** holds the removable memory **20** on which images are stored. The printer **100** can print images directly from the removable memory **20**. Although the printer **100** is shown as communicating to the removable memory **20** through the receptacle **118**, the printer **100** may communicate using another mechanism (not shown). For example, the printer **100** could send and receive data through an Infrared Data Association (IrDA) serial port or other communication device. In addition, the printer **100** can provide a video output (not shown). Although not depicted, in one embodiment, the printer **100** can also be coupled to a computer (not shown) for printing images in a conventional fashion.

Because the printer **100** includes the LCD **104** and corresponding computer readable program instructions, the printer **100** is capable of displaying images on the LCD **104**. The images displayed may also be rotated by the printer **100** so that a user can view portrait or landscape images in the proper orientation from the same point of view. Moreover, the printer **100** is capable of processing raw image data, such as CFA data. In the embodiment shown, the image processing block **108** processes raw image data. However, in another embodiment, processing of raw image data is performed using software which is preferably stored in the non-volatile memory **116**. In a preferred embodiment, the printer **100** also allows a user to modify images, including adding sound, and is capable of reading and writing images in a number of different file formats. For example, a user could modify an image by adjusting the contrast, the brightness, or the hue. The user could also crop the image, rotate the image, compensate for distortion, perform perspective compensation, or other operations. The printer **100** can also be used to archive images captured, for example by storing processed image data or image data saved in a different file format on the removable memory **20** inserted in the removable memory receptacle **118**.

In order to provide the functions discussed above, the printer **100** includes an operating system stored in the non-volatile memory **116**. FIG. **6** depicts a high level diagram of one embodiment of a portion of the architecture of the printer **100** in accordance with the present invention.

The architecture includes a control application **130** and an operating system **150**. The control application **130** communicates with various portions of the operating system **150**. The control application **130** receives notification of events and takes appropriate action, including communicating with some of the subsystems of the printer **100**.

FIG. **7** depicts a more detailed embodiment of the architecture of the printer in accordance with the present invention. Preferably, the operating system **150** is provided using C or C++ code. However, nothing prevents the use of an operating system written in another language. Also in a preferred embodiment, the operating system **150** is similar to and compatible with an operating system provided in the digital camera **10**. However, nothing prevents the use of another operating system in the digital camera **10**.

As discussed above, the operating system **150** communicates with the control application **120**. Coupled with the control application **120** are an event manager **152**, a spooling manager **154**, and a media broker **162**. The operating system **150** further includes an image processing module(s) **156** coupled to the spooling manager **154** and a watermark manager **160** coupled to the image processing module(s) **156**. A JPEG engine **158** is preferably coupled to the image processing module(s) **156**. If image data is compressed into another format, the engine **158** may use a format other than JPEG. A database manager **164** if coupled to the media broker **162** and the JPEG engine **158**. A file extension module (“FEM”) manager **166** is coupled to the database manager **164** and the spooling manager **154**. Three file FEMs **168**, **169**, and **170** are depicted as coupled with the FEM manager **166**.

The event manager **152** receives notification of interrupt events from various portions of the printer **100**. For example, the event manager **152** may be notified when the removable memory **20** is inserted into or removed from the removable memory receptacle **118**. Similarly, the event manager **152** may be notified when the user pushes one of the buttons **106** in the graphical user interface **102**. In turn, the event manager **152** notifies the control application **130** of the events.

The spooling manager **154** oversees a background spooling process (not shown) used for processing raw image data in the background. Note that if processing is not desired to take place in the background, the spooling manager **154** may be omitted. Because the printer **100** can process image data in the background, the printer **100** can multitask and perform other functions, such as printing an image, while data for another image is being processed. In order to process raw image data, the spooling manager **154** uses the image processing module(s) **156** and the JPEG engine **158**. Preferably, the JPEG engine handles compression and decompression of images. Preferably, the image processing module(s) **156** use the compression provided by the JPEG engine to store processed image data in JPEG format. During processing, the spooling manager **154** also communicates with FEM manager **166** and utilizes FEMs **168**, **169**, or **170** to be able to provide the processed image data in the appropriate format. When image processing is completed, the spooling manager **154** may also transfer image data to another memory, such as the removable memory **20** for storage. The spooling manager **154** also notifies the control application **130** that processing for that image has completed.

The media broker **162** provides an intermediary between the database of images and sounds and the graphical user interface **102**. The media broker aids in retrieving images

from a database for display on the LCD **104**. The media broker **162** also sorts images in the database and is capable of attaching sound to an image file. Furthermore, the media broker **162** allows a user to group images for placement in a folder. The media broker **162** also allows a user to mark an image. In addition, the media broker **162** may also allow a user to find desired images using a search function.

The database manager **164** aids in building and maintaining a database of images (not shown) accessible to the printer **100**. The database manager **164** also uses the decompression provided by the JPEG engine **158** to aid in displaying images in the database. While building the database of images, the database manager **164** preferably communicates with the FEM manager **166** to ensure that the appropriate FEM **168**, **169**, or **170** exists for displaying images having a particular file format. Preferably, if the appropriate FEM **168**, **169**, or **170** does not exist, then the image is not included in the database. In a preferred embodiment, the database manager **164** is capable of handling "hot" mounting and unmounting of the removable memory **20**. Thus, in a preferred embodiment, the removable memory **20** can be inserted into or removed from printer **100** during image processing. For a more detailed description of hot mounting and unmounting of volumes in accordance with the present inventions, please refer to U.S. patent application Ser. No. 09/016,153 filed on Jan. 30, 1998 entitled "Method and System for Managing Image Related Events Without Compromising Image Processing" and assigned to the assignee of the present invention. Applicant hereby incorporated by reference the above-mentioned U.S. Patent Application.

The FEMs **168**, **169**, and **170** are plug-in modules that provide support for file formats. In a preferred embodiment, one of the FEMs **168**, **169**, or **170** includes a "built-in" or default file format in which image files are stored if another file format is not chosen. In the preferred embodiment of the operating system **150**, the FEM **168** includes the built-in file format. Thus, the printer **100** as shown supports two additional file formats, one for each additional FEM **169** and **170**. However, nothing prevents the printer **100** from supporting a different number of additional file formats.

Each FEM **168**, **169**, and **170** includes a file format and APIs. Each file format determines how an image file consistent with the file format is stored. For example, the formats for image data include TIFF, JPEG, and EXIF. Moreover, each file format may pack image data and other information stored in a file in different ways. Each FEM **168**, **169**, and **170** contains information regarding both the type of data stored in a file using the file format and how the data are packed in the file. The APIs allow the FEMs **168**, **169**, and **170** to communicate with the FEM manager **166**. Consequently, the APIs are consistent with those developed for communication with the FEM manager **166**.

The FEM manager **166** is capable of communicating with the individual FEMs **168**, **169**, and **170** even though each FEM **168**, **169**, and **170** supports a different file format. Transfers of information between the FEM manager **166** and each of the FEMs **168**, **169**, and **170** are specific to the file formats supported by each FEM **168**, **169**, and **170**. The FEM manager **166** also communicates with the media broker **162** through the database manager **164** and with the spooling manager **154**. Communication between the FEM manager **166** and another portion of the operating system **150**, is standardized and independent of the file formats of individual image files, not shown. However, nothing prevents the built-in file format from being provided through a mechanism other than the FEM **168**, **169**, or **170**. For a more detailed description of making additional file formats avail-

able to the printer in accordance with the present inventions, please refer to U.S. patent application Ser. No. 08/978,794 filed on Nov. 26, 1997 and entitled "Method and System for Extending the Available Image File Formats in an Image Capture Device" and assigned to the assignee of the present invention. Applicant hereby incorporated by reference the above-mentioned U.S. Patent Application.

FIG. 7 also depicts a portion of the architecture used in presenting images to the user and controlling the GUI **102**. The portion of the operating system **150** used in presenting images to the user and controlling the GUI **102** includes a LCD manager **172**, a menu and dialog manager **174**, and an optional status LCD manager **176**, all of which are coupled to the control application **130**. The GUI toolbox **175** is coupled to the menu and dialog manager **174**. A font manager **178** is coupled to the control application **130** and the menu and dialog manager **174**. A graphics manager **180** is coupled to the menu and dialog manager **174**, the control application **130**, the GUI toolbox **175**, and the font manager **178**.

The GUI toolbox **175** handles various tasks used in providing a graphical user interface, such as drawing icons and providing menus. Preferably, the GUI toolbox **175** includes a plurality of Application Program Interfaces ("APIs") used in conjunction with the graphics manager **180**. The LCD manager **172** provides routines used to control the LCD **102**. Similarly, the optional status LCD manager **176** controls an optional status LCD (not shown). The graphics manager **180** is used to create the display shown on the LCD **102**. Thus, images, menus, or other items to be displayed on the LCD **102** are controlled by the graphics manager **180**. The graphics manager **180** provides functions used to render these items on the LCD **102**. Preferably, the graphics manager **180** is a toolbox called by various portions of the operating system **150**.

The menu and dialog manager **174** allows menus to be provided to the user via the LCD **102**. Preferably, the menus can be customizable. The menu and dialog manager **174** utilizes fonts provided by the font manager **178** to define the fonts to be used in the menu. The menu and dialog manager **174** communicates with the graphics manager **180** to provide the menu to the LCD **102**. The user utilizes the menus to interact with the printer **100**.

FIG. 7 also depicts a communications manager **182** coupled to the control application **130**. Coupled to the communications manager **182** are IrDA port **184**, Universal Serial Bus ("USB") port **186**, and serial port **188**. The ports **184**, **186**, and **188** provide interfaces to other systems, such as the digital camera **10** or a host (not shown). Note that other types of ports (not shown) could be used. The communications manager **182** enables and disables communications and controls the ports **184**, **186**, and **188**. Consequently, the printer **100** can communicate with other devices, such as the printing device **114** through a variety of mechanisms.

FIG. 8 depicts one embodiment of a method **200** for utilizing the printer **100**. Although FIG. 8 depicts the method **200** as performing certain steps in a particular order, the method **200** could perform these steps in another order or could perform other steps. A user inserts the removable memory **20** into the removable memory receptacle **118**, via step **201**. Thus, the user provides the images files that are of interest to the printer **100** in the step **201**. In an alternate embodiment, the user might provide these image files over the IrDA port or other communication device. The printer **100** detects the insertion of the removable memory **20** and

scans the removable memory for image files, via step 202. If the removable memory 20 includes image files having raw image data, then via step 204, the raw image data is processed. The images on the removable memory, including the images having raw image data being processed, are added to the database of available image files via step 206. In a preferred embodiment, only image files having file formats which are supported by the FEMs 168, 169, or 170 are added to the database in step 206. The available images in the database are then displayed on the LCD 102, via step 208. In one embodiment, the images are displayed by displaying small, low resolution version of the images, known as thumbnails. In an alternate embodiment, the available images may be displayed as a list.

A user may then select an image via step 210. The user can perform a variety of operations on the image selected, such as modifying the image by adding sound or text, or printing the image. The image is then displayed via step 212. Preferably, a larger, low resolution version of the image is displayed in step 212.

It is then determined if the user desires to modify the image, via step 214. If the user wishes to modify the image, then via step 216 the user selects how the image is to be modified. For example, the user may rotate or crop the image, add sound, or adjust the hue or brightness. The modified image is then displayed on the LCD 104, via step 220. The modifications are then kept or undone via step 222, depending on whether the user desires to keep the modifications.

If it is determined in step 214 that the user does not wish to modify the image, or if step 222 is completed, then it is determined whether the user has directed the printer 100 to print the image, via step 224. If the user has directed the printer 100 to print the image, then via step 226 the image data is formatted and provided to the printing device 114 which generates a hard copy of the image.

If the user has not directed the printer 100 to print the image or the printer 100 has formatted and provided the data to the printing device 114 in step 226, then it is determined via step 228 if the image has been modified by the user. If the image has been modified by the user, then it is determined if the user desires to save the modification in step 230. If the user desires to save the modification, then in step 232 the image is saved in a desired file format supported by one of the FEMs 168, 169, or 170. If appropriate, the image is saved in a different file format in step 232.

If it is determined in step 228 that the image has not been modified or it is determined in step 230 that the user does not wish to save the modifications, then step 234 is performed. In step 234, it is determined if the user has directed the printer 100 to save the image in a different file format. If so, then in step 236 the image is saved in a new file format supported by the printer 100. Consequently, the user is able to view, modify, print, and change the file format of an image using the printer 100. In addition, the printer 100 is capable of processing raw image data, such as CFA data, and displaying the image to the user.

A method and system has been disclosed for providing a printer having increased functionality. Although the present invention has been described in accordance with the embodiments shown, one of ordinary skill in the art will readily recognize that there could be variations to the embodiments and those variations would be within the spirit and scope of the present invention. Accordingly, many modifications may be made by one of ordinary skill in the art without departing from the spirit and scope of the appended claims.

What is claimed is:

1. A printer capable of generating a hard copy of at least one image stored in an image file, the at least one image being stored in a first format, the printer comprising:
 - 5 a graphical user interface for allowing a user to view at least a portion of the image; and
 - a printing device coupled with the graphical user interface for printing the hard copy of the at least one image; and
 - 10 means coupled with the graphical user interface for storing the at least one image in a second format wherein the graphical user interface and the printing device are integrated together in the printer.
2. The printer of claim 1 wherein the first format includes raw image data.
3. The printer of claim 1 further comprising:
 - 15 means coupled with the storing means for modifying the at least one image.
4. A printer capable of generating a hard copy of at least one image stored in a first file format, the printer comprising:
 - 20 means for storing the at least one image in a second file format on a removable memory, thereby allowing the at least one image to be converted from the first file format to the second file format; and
 - a printing device coupled with the storing means for printing the hard copy of the at least one image.
5. The printer of claim 4 further comprising:
 - 25 means coupled with the storing means for modifying the at least one image.
6. A printer capable of generating a hard copy of at least one image in an image file having a first file format, the printer comprising:
 - 30 means for modifying the at least one image to allow a change in an appearance of the at least one image; means coupled with the modifying means for storing the modified at least one image in the first file format; and
 - 35 a printing device coupled with the storing means for printing the hard copy of the at least one image; wherein the at least one image is stored on a removable memory.
7. A printer capable of generating a hard copy of at least one image stored in an image file, the image including raw image data, the printer comprising:
 - 40 a control application for controlling the printer; at least one image processing module coupled with the control application, the at least one image processing module for processing the raw image data to provide a processed image and for storing the processed image in a first format;
 - 45 a printing device coupled with the control application for printing the hard copy of the at least one image;
 - a graphical user interface coupled with the control application for allowing a user to view at least a portion of the at least one image, the graphical user interface, the control application, the at least one image processing module and the printing device being integrated together in the printer;
 - 50 a first file extension module ("FEM") including the first format;
 - at least a second file extension module ("FEM") including a second format; and
 - 55 a FEM management layer coupled with the first FEM, the at least the second FEM, and the control application, the FEM management layer for communicating with the first FEM and the at least the second FEM to write

11

or read an image file having the first format or the second format.

8. The printer of claim 7 further comprising:

a Joint Photographic Experts Group ("JPEG") engine coupled with the at least one management layer for processing image data in the first format.

9. The printer of claim 7 wherein a user is capable of modifying the at least one image.

10. A printer capable of generating a hard copy of at least one image stored in an image file, the image including raw image data, the printer comprising:

a control application for controlling the printer;

at least one image processing module coupled with the control application, the at least one image processing module for processing the raw image data to provide a processed image and for storing the processed image in a first format;

a first file extension module including the first format;

at least a second file extension module ("FEM") including a second format;

a FEM management layer coupled with the first FEM, the at least the second FEM, and the control application, the FEM management layer for communicating with the first FEM and the at least the second FEM to write or read an image file having the first format or the second format;

a media broker coupled with the FEM manager and the control application, the media broker allowing a user to attach sound to the at least one image;

a graphical user interface coupled with the control application for allowing a user to view at least a portion of the at least one image; [and]

a printing device coupled with the control application for printing the hard copy of the at least one image;

wherein a user is capable of modifying the at least one image; and wherein the graphical user interface, the control application, the at least one image processing module, the first FEM, the at least the second FEM, the management layer, the media broker and the printing device being integrated together in the printer.

11. The printer of claim 10 wherein the graphical user interface further includes a liquid crystal display screen.

12. A method for allowing a user to print at least one image stored in an image file using a printer, the method comprising the steps of:

displaying a list including the at least one image;

processing raw image data in the at least one image file using the printer if the at least one image file includes the raw image data;

allowing a user to print the at least one image;

allowing a user to modify the at least one image to allow a change in an appearance of the at least one image using the printer; and

12

saving the modified at least one image using the printer; wherein the at least one image is stored on a removable memory.

13. A method for allowing a user to print at least one image stored in an image file using a printer, wherein the at least one image is saved in at least a first file format, the method comprising the steps of:

displaying a list including the at least one image;

processing raw image data in the at least one image file using the printer if the at least one image file includes the raw image data;

allowing a user to print the at least one image; and

allowing a user to save the at least one image in a second file format on a removable memory, thereby allowing the at least one image to be converted from the first file format to the second file format.

14. A method for allowing a user to print at least one image stored in an image file using a printer having a display, the method comprising the steps of:

displaying the at least one image on the display of the printer, the display being integrated into the printer;

allowing a user to print the at least one image; and

allowing a user to save the at least one image in a second format.

15. The method of claim 14 further comprising the steps of:

processing raw image data in the at least one image file using the printer if the at least one image file includes the raw image data;

allowing a user to print the at least one image.

16. The method of claim 14 further comprising the steps of:

allowing a user to modify the at least one image using the printer; and

saving the modified at least one image using the printer.

17. A method for allowing a user to print at least one image stored in an image file using a printer, the method comprising the steps of:

displaying a list including the at least one image;

processing raw image data in the at least one image file using the printer if the at least one image file includes the raw image data;

allowing a user to print the at least one image;

allowing a user to modify the at least one image to allow a change in an appearance of the at least one image using the printer; and

saving the modified at least one image to a removable memory using the printer.

* * * * *